

SWAN HILL TOWN HALL DETAILS

Stage:

Surface: Sealed Jarrah boards	
Depth of stage behind proscenium:	6.8m
Depth of Apron (forestage):	2m
Total stage depth:	8.5m
Width of stage (including wings):	17m
Useable width of forestage:	10m
Proscenium opening:	9.6m wide x 5.14m tall

Masking, Tabs, etc:

From front of stage: Smoke Curtain, House Curtain (Maroon), Legs & Border, Lighting Bar, Legs & Border, Legs & Border, Lighting Bar, Lighting Bar, Legs & Border, Lighting Bar, Legs & Border, Lighting Bar, Black Tabs. All support bars are 12.0m long, all items flown, Except House Curtain and Smoke Curtain.

Loading Dock:

Hydraulic floor located on West side of stage
2.5m wide
Loading dock door 1.25m wide located on Beveridge Street side

Fly Tower:

Height of Fly & Electrics galleries:	6.1m
Height of Loading Gallery:	10.3m
Counterweight lines:	16 connected
Grid Height to Stage Floor Lines 1-6	7.2m
Grid Height to Stage Floor Lines 7-26	11m

Audio:

1x	Sound Craft spirit rollo Rac Pac (10 Mic/2 Strero/4-6 Aux)
1x	Sony Mini Disc Recorder MDS-E12
2x	Denon CD/Cassette Deck DN-T620
1x	Pioneer Stereo double cassette deck CT-WT202
2x	Phonic EQ's PEQ3300
1x	ARX Duel Channel EQ. EQ260
2x	Sennheiser Diversity Receivers EW100
1x	Audio Telex IC30 (Foyer Program Amp)
1x	Australian Monitor installation Series AMIS 120 (Dressing Room Amp)
1x	Turner G4 Foldback Amp
1x	DBX Driver Rack 260 (loud speaker management system)
3x	Crown XLS 602 (house speaker Amps)
4x	EAW House Speakers
9x	Turbo sound 'fill Loud Speakers (FOH)
2x	Turner Foldback Passive Speakers
2x	HK DART Active Foldback Speakers
5x	Microphone Stands
2x	Sennheiser EW100 Cordless Microphones
2x	Sennheiser EW100 Lapel Microphones
1x	Sennheiser E815s Microphone
2x	Sennheiser E845 Microphone
1x	Shure SM58
1x	Sennheiser HD25 Headphones

Kitchen

5.8 sqm	Coolroom
6	Electric Hotplates
2	Warmers
2	Conventional ovens (fan-forced)
1	Dishwasher
1	Bain Marie
1	Deep fryer
3	20Lt Urns (portable)
Glasses, cutlery and crockery to suit 320 patrons	

Kiosks:

<i>One kiosk at ground floor in the bar area</i>	
1	Cool Room
2	Beer Lines (4 Taps)
2	Fridges
2	Ice tubs (ice not provided)
1	Glass washer
<i>One kiosk in the first floor foyer</i>	
1	Large Fridge available

Seating:

Main Hall: (removable seating)	412 Theatre
	320 Cabaret
	270 Dance Floor
Dress Circle & Balcony: (Fixed)	469

Dressing Rooms:

5x	Unisex Dressing Rooms each with Dressing Table and Mirrors
6x	Sinks
3x	Showers
4x	Toilets

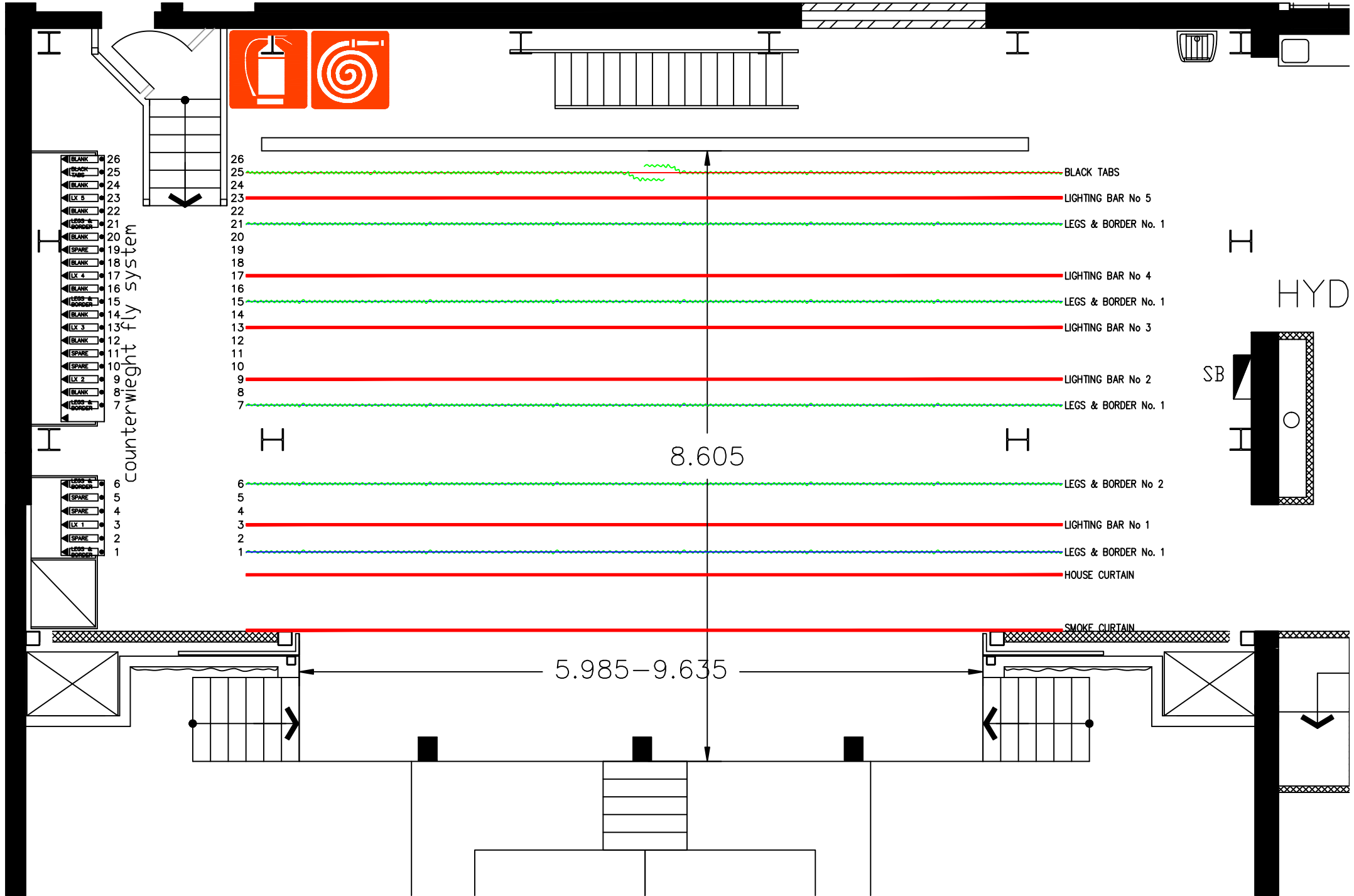
Lighting:

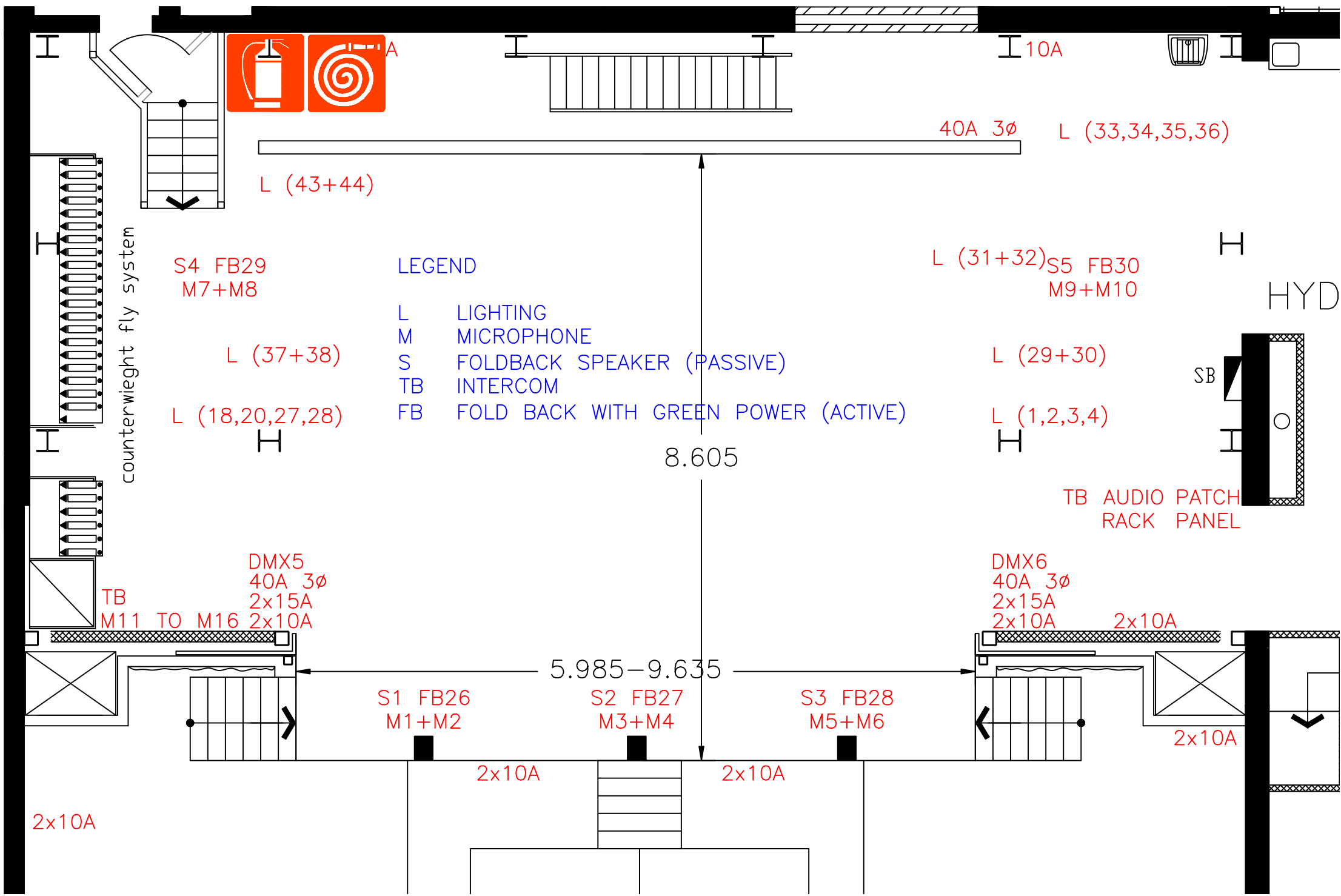
1x	ETC Express lighting board	
1x	Strand Solo SCI Follow Spot	
5x12	Dimmer Racks	2.4kw
	(4 Lx Gallery 1 FOH)	
12x	Pacific Profiles	1kw (FOH)
10x	Selecon Fresnel	1.2kW
4x	Strand Fresnel	650W
4x	Strand PC	650W
2x	Strand Cantata PC	1.2kW
2x	Strand 28/40 Profile	650W
6x	Strand Cantata 18/32 Profile	1.2kW
2x	Strand Cantata 11/26 Profile	1.2kW
12x	Multi-pars	600W
6x	24/44 Profiles	600W
4x4	Selecon Aurora Cyc	1.25KW

Publicity & Promotion:

Newspaper:	
<i>Swan Hill Guardian</i>	03-5032 2161
Radio:	
<i>3SH Mixx FM</i>	03-5032 9400
<i>Smart FM</i>	03-5032 5991
Television:	
<i>Ten Victoria</i>	03-927510

STAGE EQUIPMENT





LEGEND

- L LIGHTING
- M MICROPHONE
- S FOLDBACK SPEAKER (PASSIVE)
- TB INTERCOM
- FB FOLD BACK WITH GREEN POWER (ACTIVE)

H
HYD

SB

counterweight fly system

S4 FB29
M7+M8

L (37+38)

L (18,20,27,28)

L (31+32) S5 FB30
M9+M10

L (29+30)

L (1,2,3,4)

TB AUDIO PATCH
RACK PANEL

DMX5
40A 3ø
2x15A
M11 TO M16 2x10A

DMX6
40A 3ø
2x15A
2x10A

S1 FB26
M1+M2

S2 FB27
M3+M4

S3 FB28
M5+M6

2x10A

2x10A

2x10A

2x10A

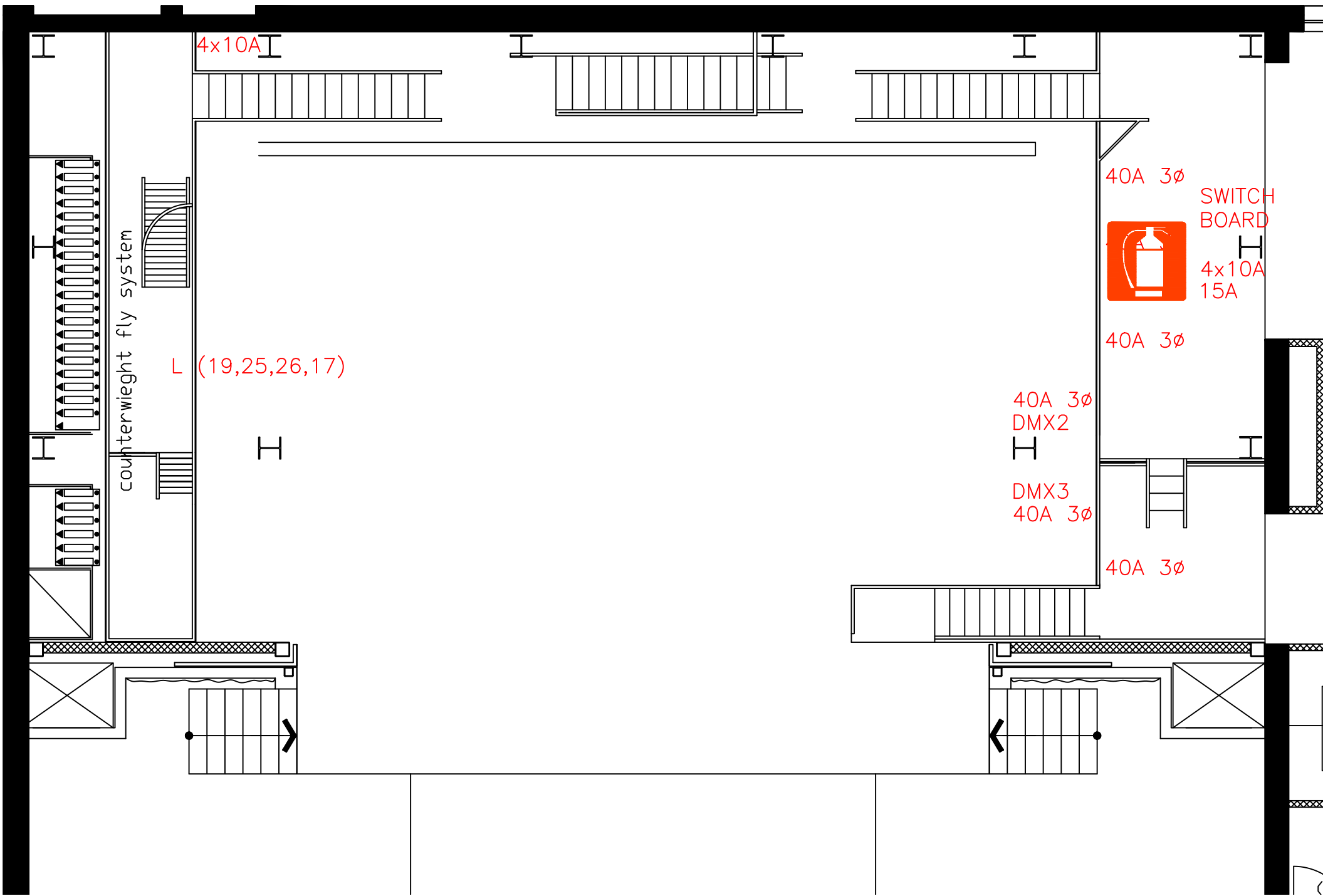
10A

40A 3ø

L (33,34,35,36)

8.605

5.985-9.635



4x10A

counterweight fly system

L (19,25,26,17)

40A 3ø
SWITCH BOARD
4x10A 15A

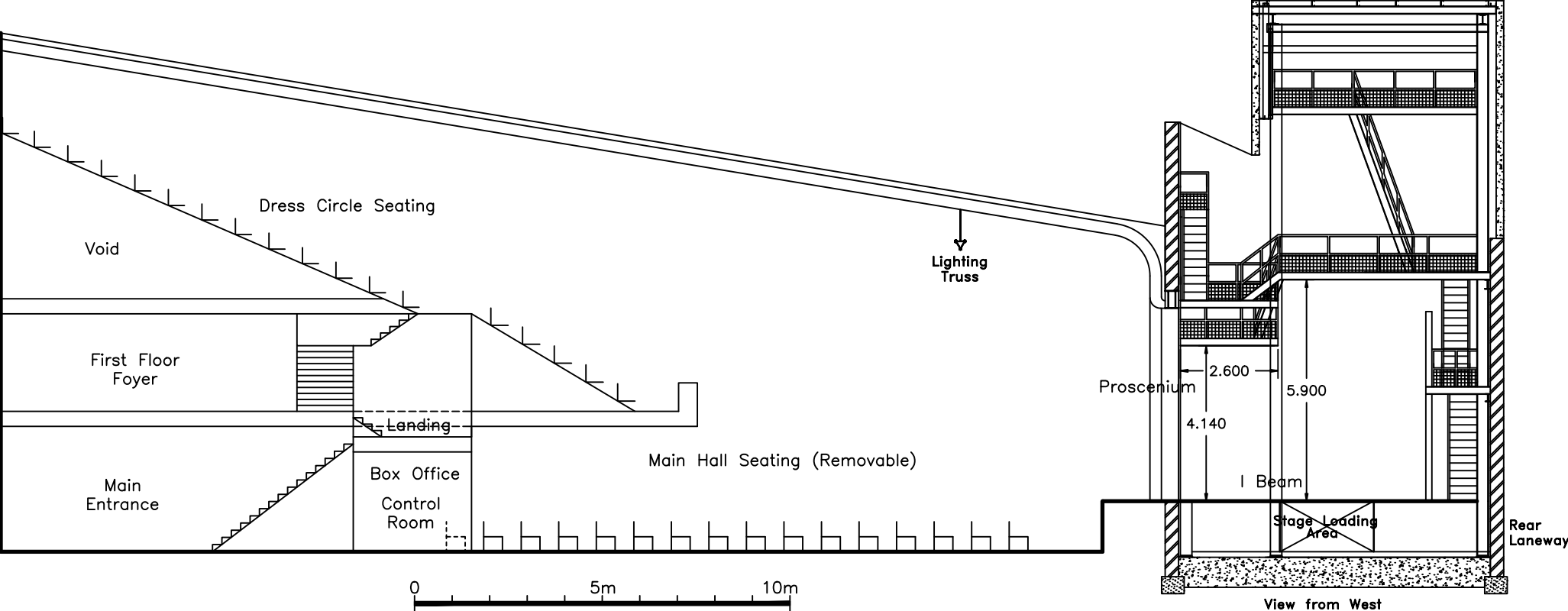
40A 3ø
DMX2

DMX3
40A 3ø

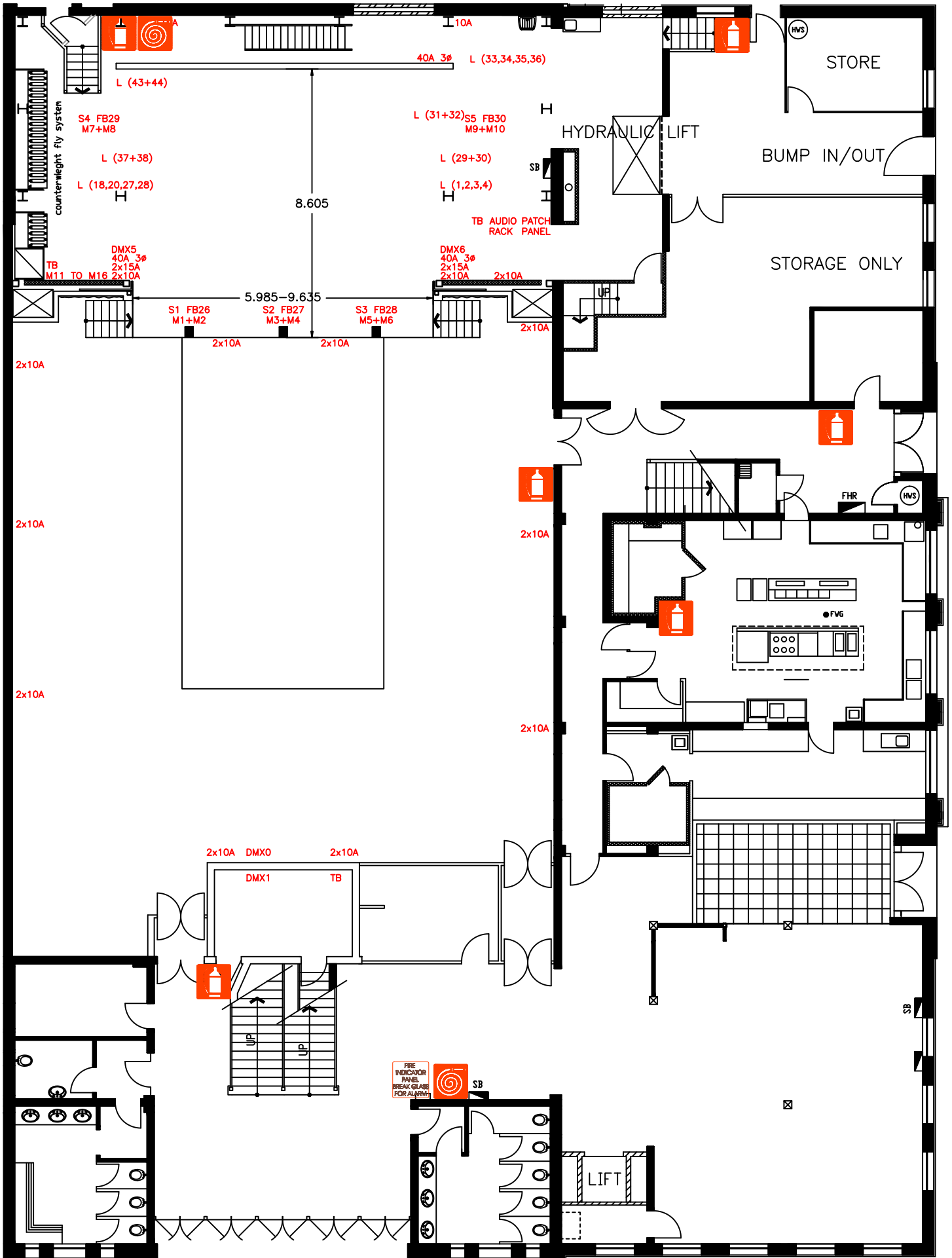
40A 3ø

40A 3ø

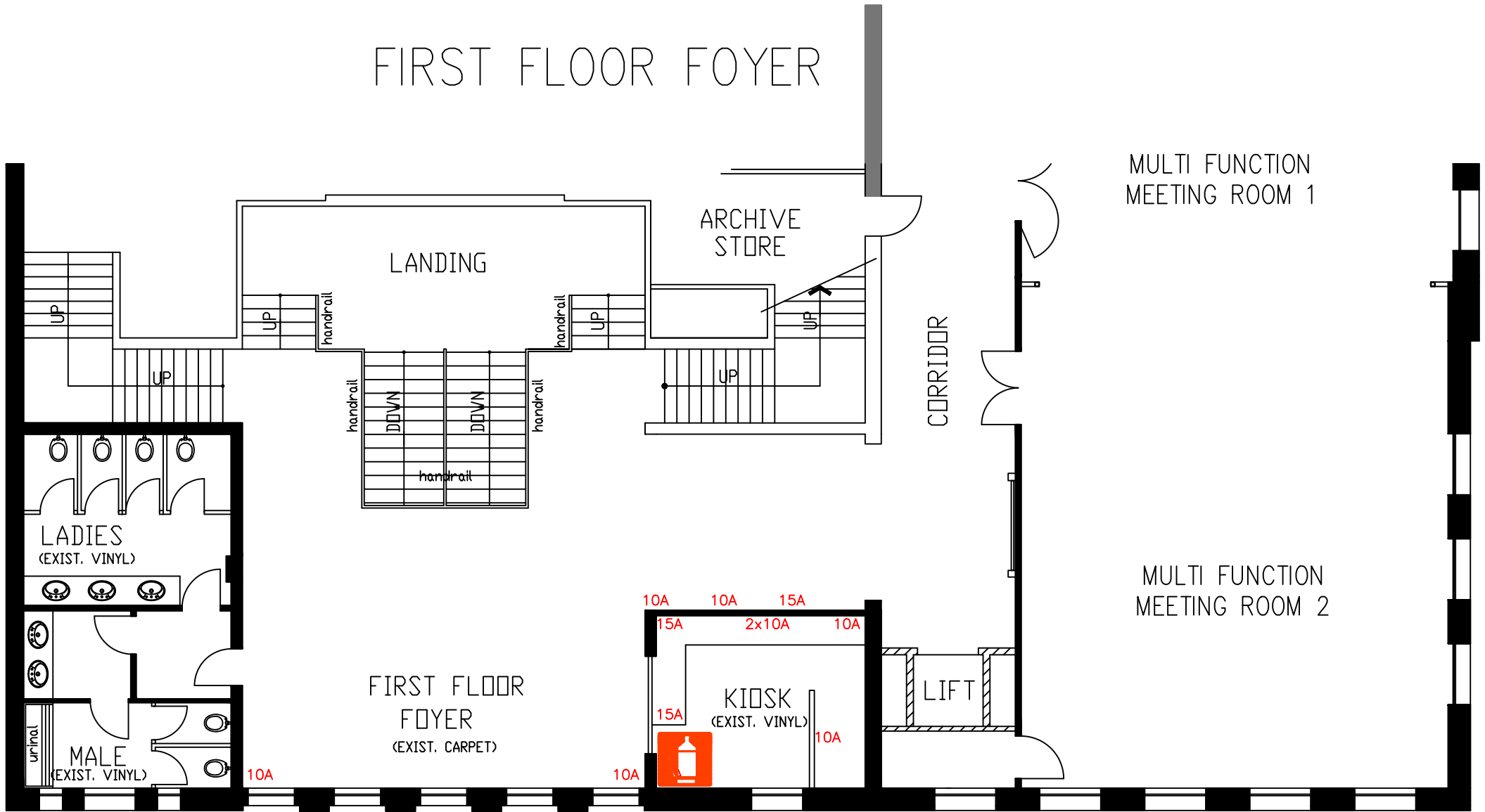
OVERALL CROSS SECTIONAL VIEW



GROUND FLOOR LAYOUT



FIRST FLOOR FOYER



MULTI FUNCTION MEETING ROOM 1

MULTI FUNCTION MEETING ROOM 2

ARCHIVE STORE

LANDING

LADIES
(EXIST. VINYL)

MALE
(EXIST. VINYL)

FIRST FLOOR FOYER
(EXIST. CARPET)

KIOSK
(EXIST. VINYL)

LIFT

CORRIDOR

10A 10A 15A
15A 2x10A 10A
15A 10A
10A

